



Single Family  
**Capstone**  
Classic Collection at Wolf Ranch

**NEW HOME SPECIALIST**  
Call Us @ (719) 452-8952



**Priced From**  
**\$613,600**

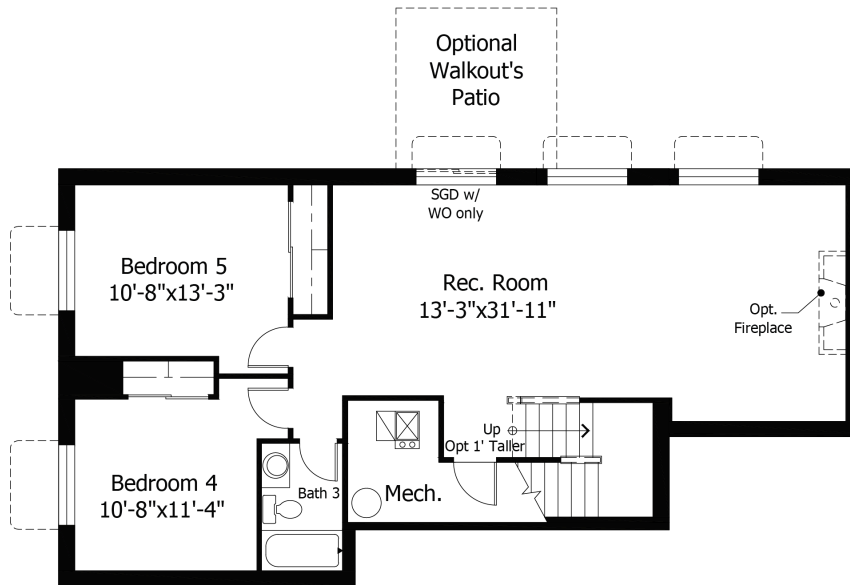
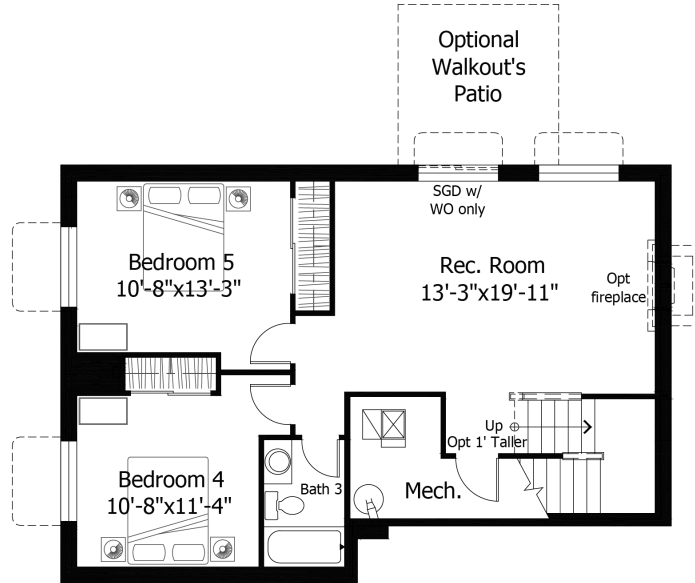
**2 Elevations Available**

-  **3** Bedrooms
-  **0** Bathrooms
-  **1,991+** Sq. Ft.
-  **2** Car Garage



All square footage is approximate. Renderings are artist's conceptions and may vary slightly from the actual home. Homes may be built in reverse of plans shown, depending on site conditions. Minor architectural changes may be made occasionally at the option of the builder. Please contact your Sales Consultant for details.

Lower

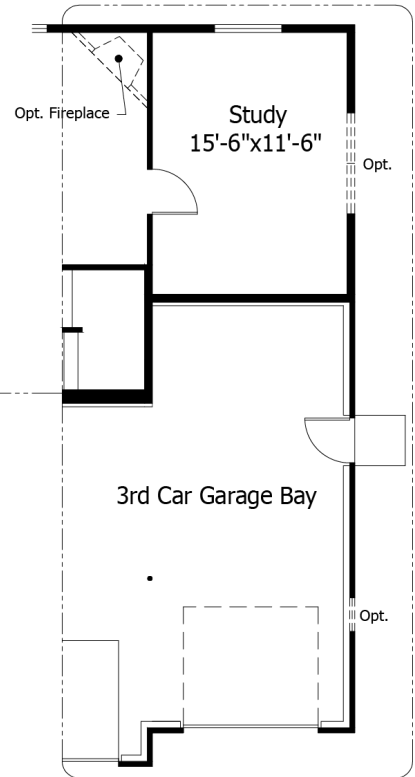
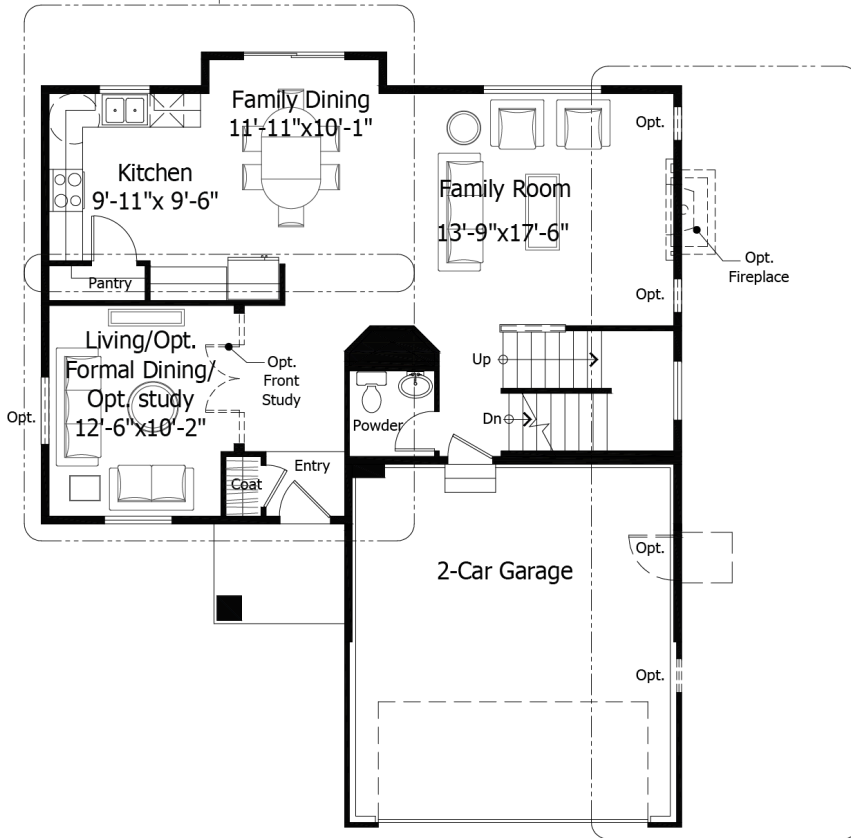
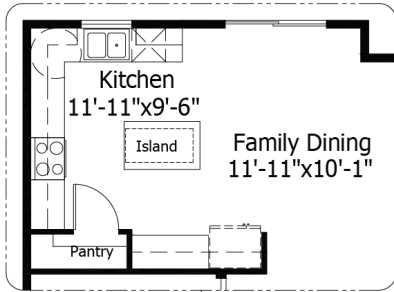


Basement Level w/ Opt. Finish  
 (Shown w/ Opt. 3-car Garage  
 with Study Included Above)

All square footage is approximate. Renderings are artist's conceptions and may vary slightly from the actual home. Homes may be built in reverse of plans shown, depending on site conditions. Minor architectural changes may be made occasionally at the option of the builder. Please contact your Sales Consultant for details.

Main

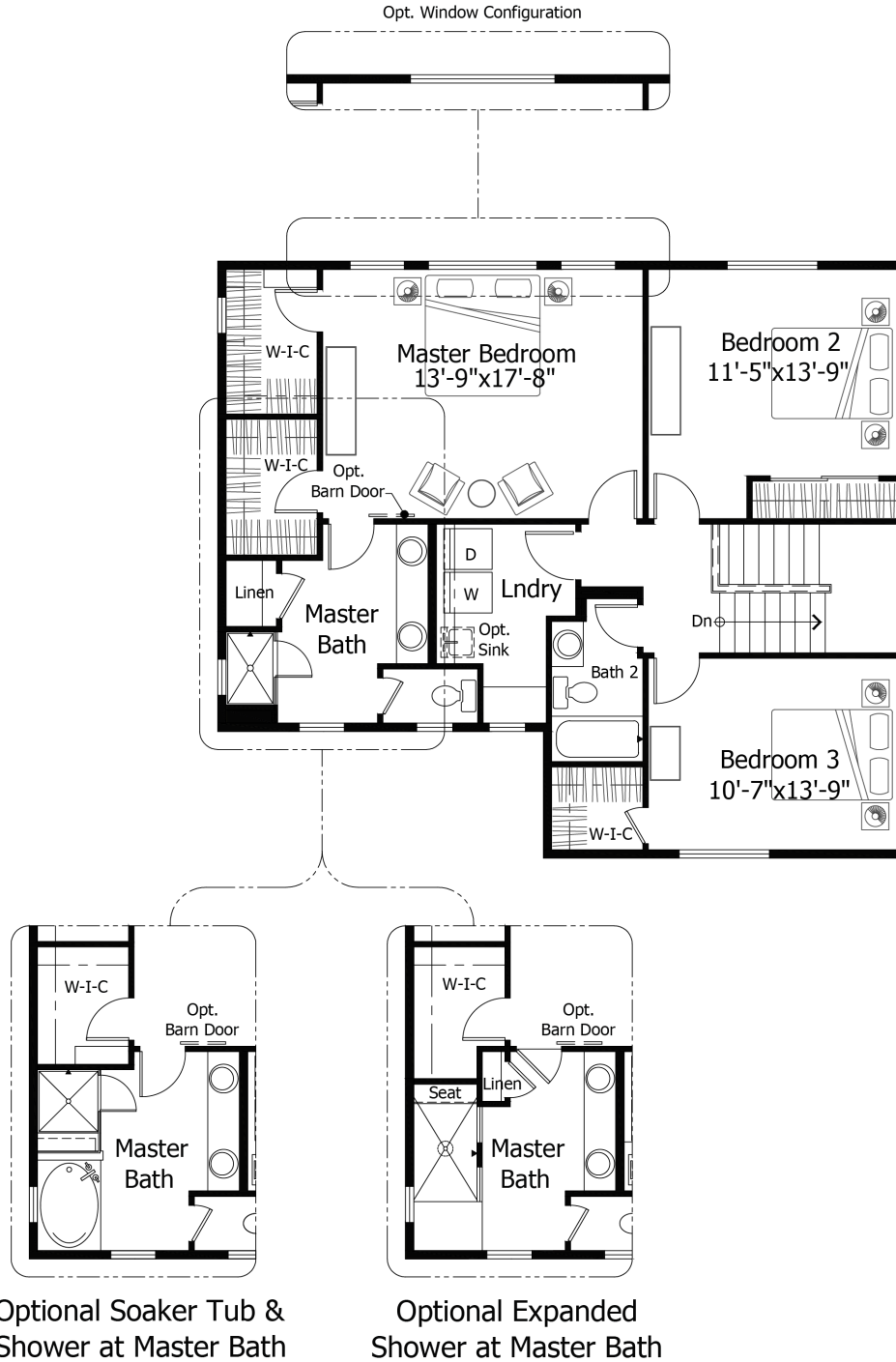
Expanded Kitchen Option



3-car Garage with Study Option

All square footage is approximate. Renderings are artist's conceptions and may vary slightly from the actual home. Homes may be built in reverse of plans shown, depending on site conditions. Minor architectural changes may be made occasionally at the option of the builder. Please contact your Sales Consultant for details.

# Upper



All square footage is approximate. Renderings are artist's conceptions and may vary slightly from the actual home. Homes may be built in reverse of plans shown, depending on site conditions. Minor architectural changes may be made occasionally at the option of the builder. Please contact your Sales Consultant for details.