

Single Family
Midtown 223
Percheron

NEW HOME SPECIALIST
Call Us @ (719) 888-3223



Priced From
\$490,600

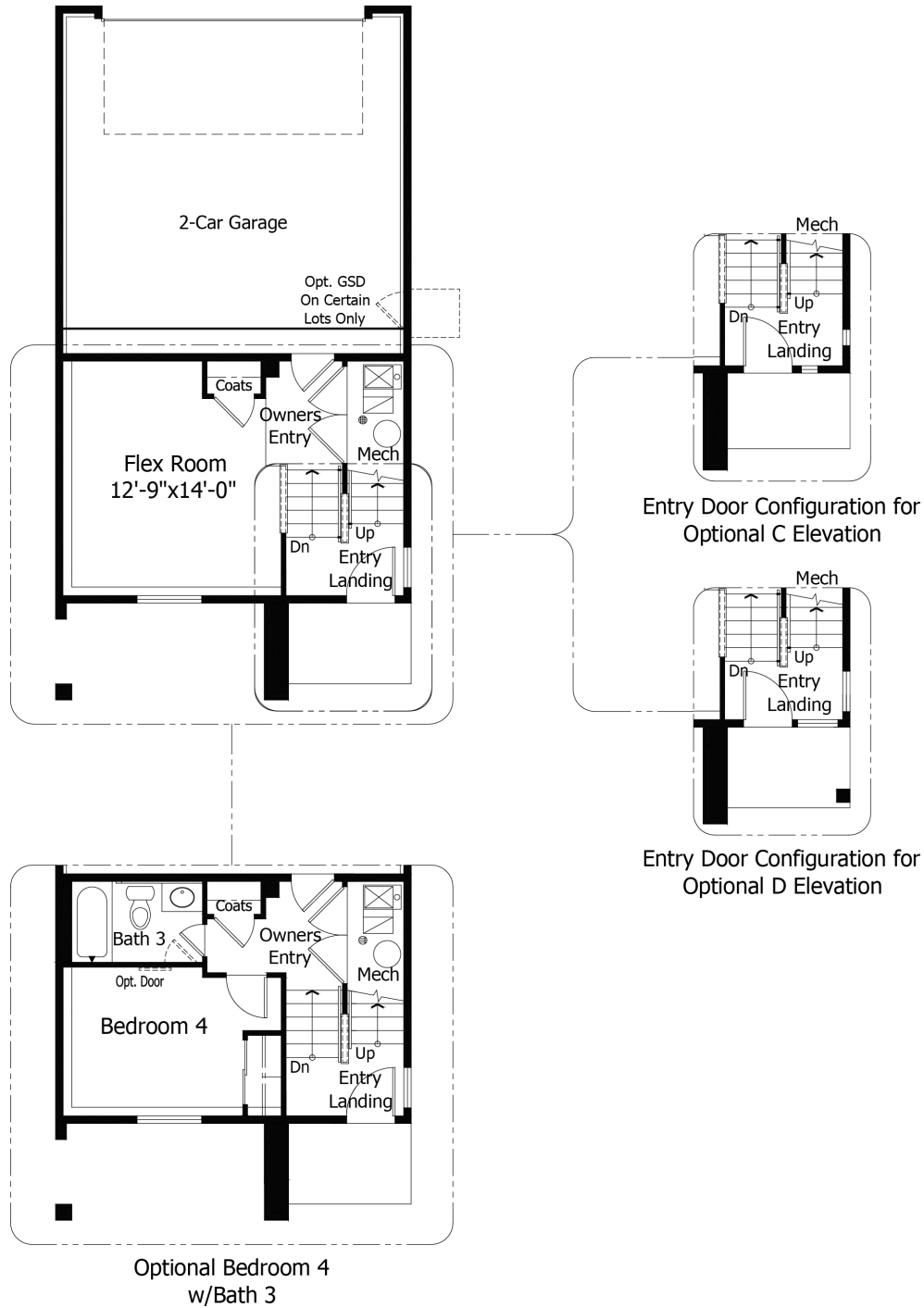
4 Elevations Available

-  **2** Bedrooms
-  **0** Bathrooms
-  **1,996+** Sq. Ft.
-  **2** Car Garage



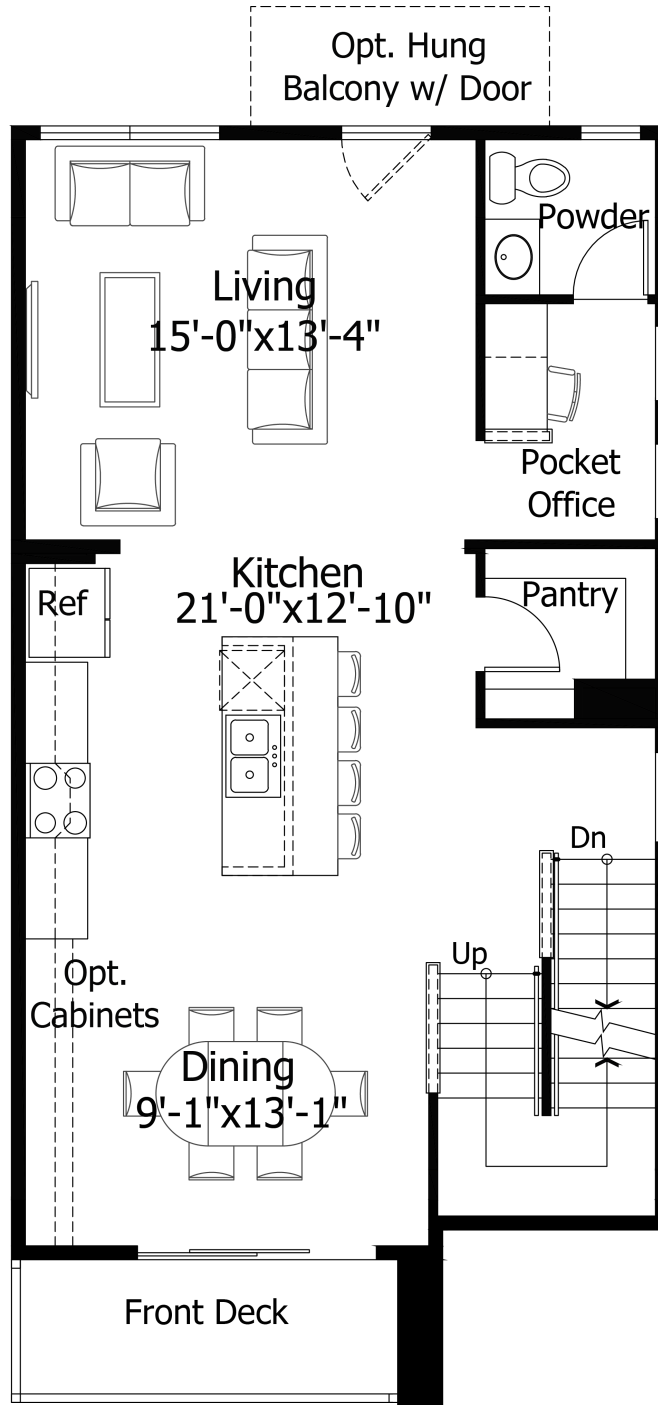
All square footage is approximate. Renderings are artist's conceptions and may vary slightly from the actual home. Homes may be built in reverse of plans shown, depending on site conditions. Minor architectural changes may be made occasionally at the option of the builder. Please contact your Sales Consultant for details.

First



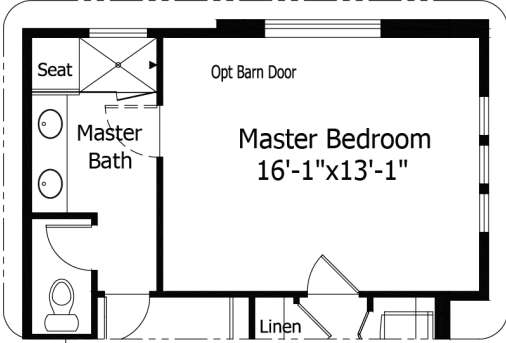
All square footage is approximate. Renderings are artist's conceptions and may vary slightly from the actual home. Homes may be built in reverse of plans shown, depending on site conditions. Minor architectural changes may be made occasionally at the option of the builder. Please contact your Sales Consultant for details.

Second

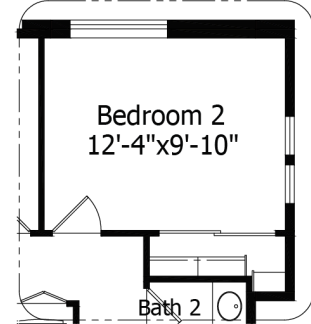


All square footage is approximate. Renderings are artist's conceptions and may vary slightly from the actual home. Homes may be built in reverse of plans shown, depending on site conditions. Minor architectural changes may be made occasionally at the option of the builder. Please contact your Sales Consultant for details.

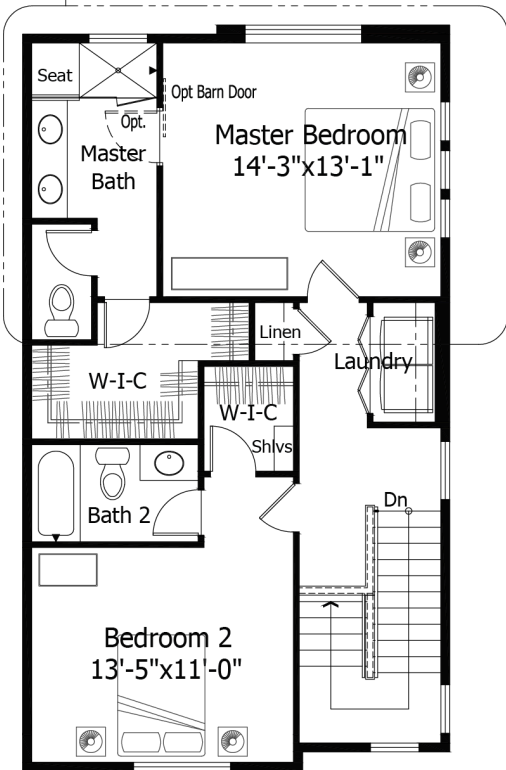
Third



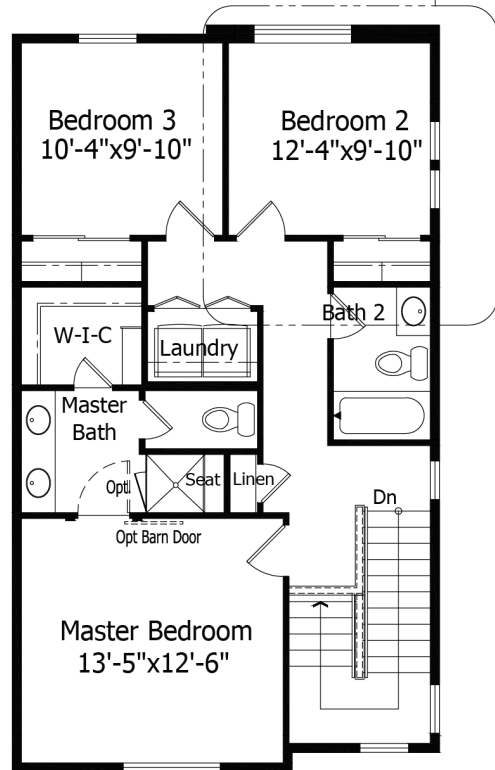
Extended Master Bedroom
(End Unit Only)



Extended Bedroom 2
w/Optional 3 Bedroom
Layout
(End Unit Only)



Standard Upper Level
Layout



Optional 3 Bedroom
Layout

All square footage is approximate. Renderings are artist's conceptions and may vary slightly from the actual home. Homes may be built in reverse of plans shown, depending on site conditions. Minor architectural changes may be made occasionally at the option of the builder. Please contact your Sales Consultant for details.