

Single Family
Preamble 274
Percheron

NEW HOME SPECIALIST

Call Us @ (719) 888-3223



Priced From
\$362,800

2 Elevations Available

 **2** Bedrooms

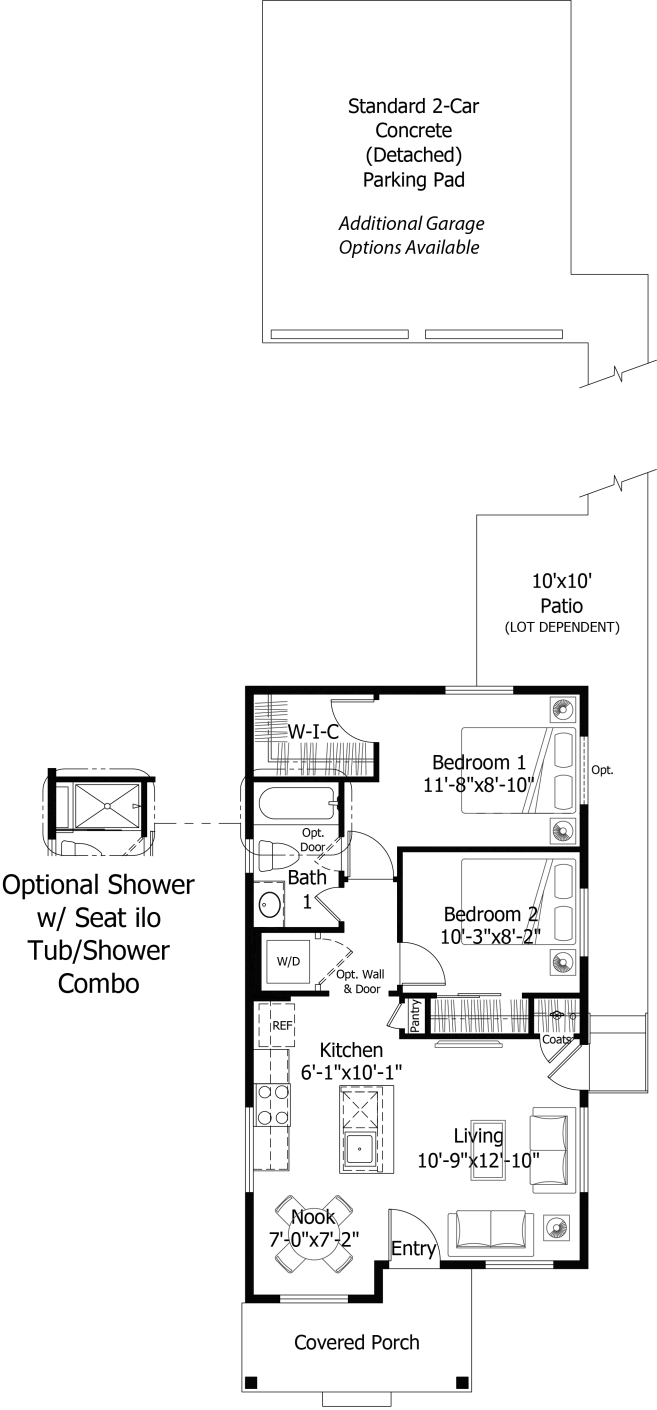
 **0** Bathrooms

 **696+** Sq. Ft.



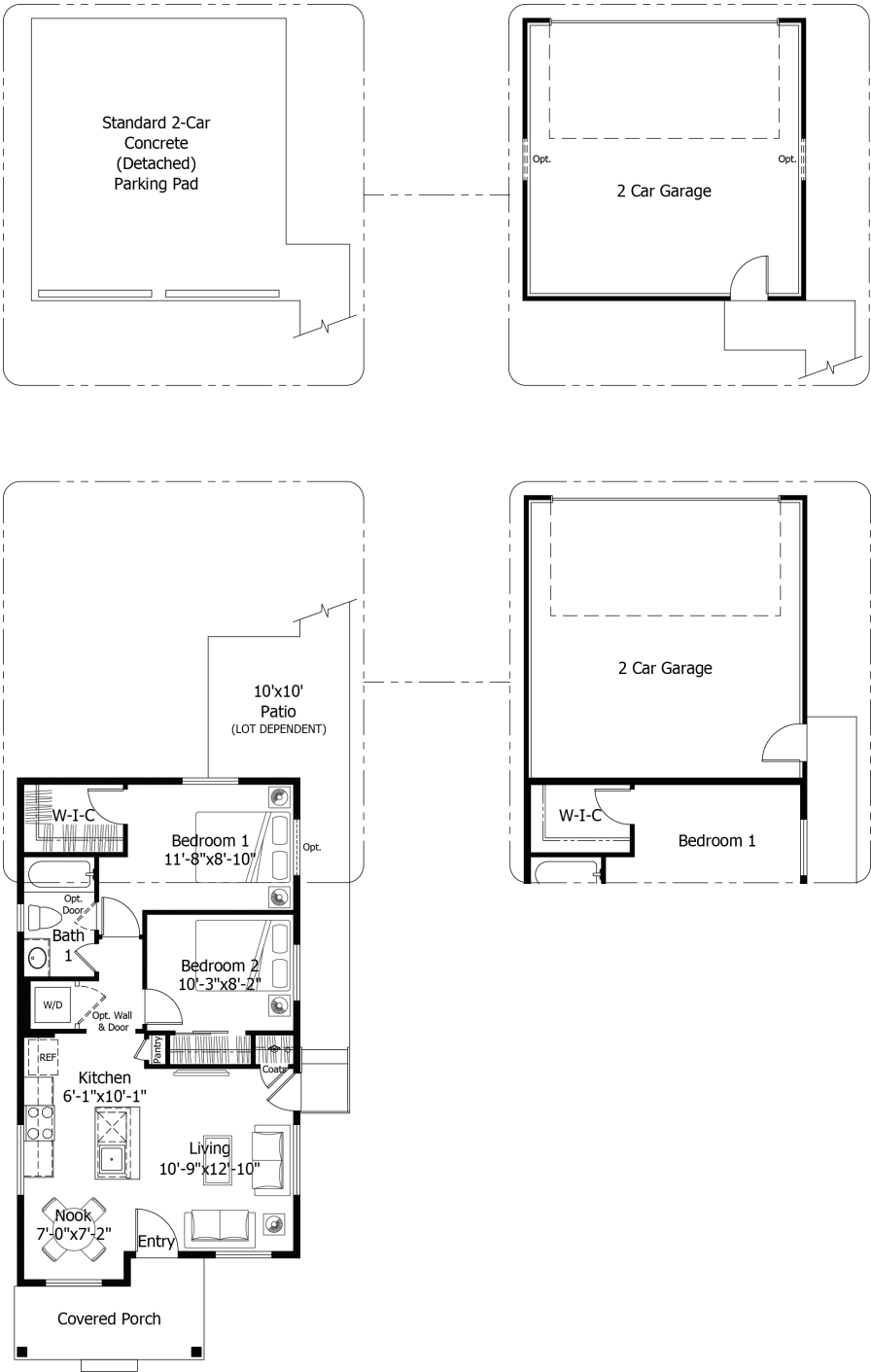
All square footage is approximate. Renderings are artist's conceptions and may vary slightly from the actual home. Homes may be built in reverse of plans shown, depending on site conditions. Minor architectural changes may be made occasionally at the option of the builder. Please contact your Sales Consultant for details.

Main



All square footage is approximate. Renderings are artist's conceptions and may vary slightly from the actual home. Homes may be built in reverse of plans shown, depending on site conditions. Minor architectural changes may be made occasionally at the option of the builder. Please contact your Sales Consultant for details.

Garage



All square footage is approximate. Renderings are artist’s conceptions and may vary slightly from the actual home. Homes may be built in reverse of plans shown, depending on site conditions. Minor architectural changes may be made occasionally at the option of the builder. Please contact your Sales Consultant for details.