

Single Family  
**Mountain**  
Sterling





**NEW HOME SPECIALIST**

Call Us @ (719) 888-3682



**Priced From**  
**\$520,000**

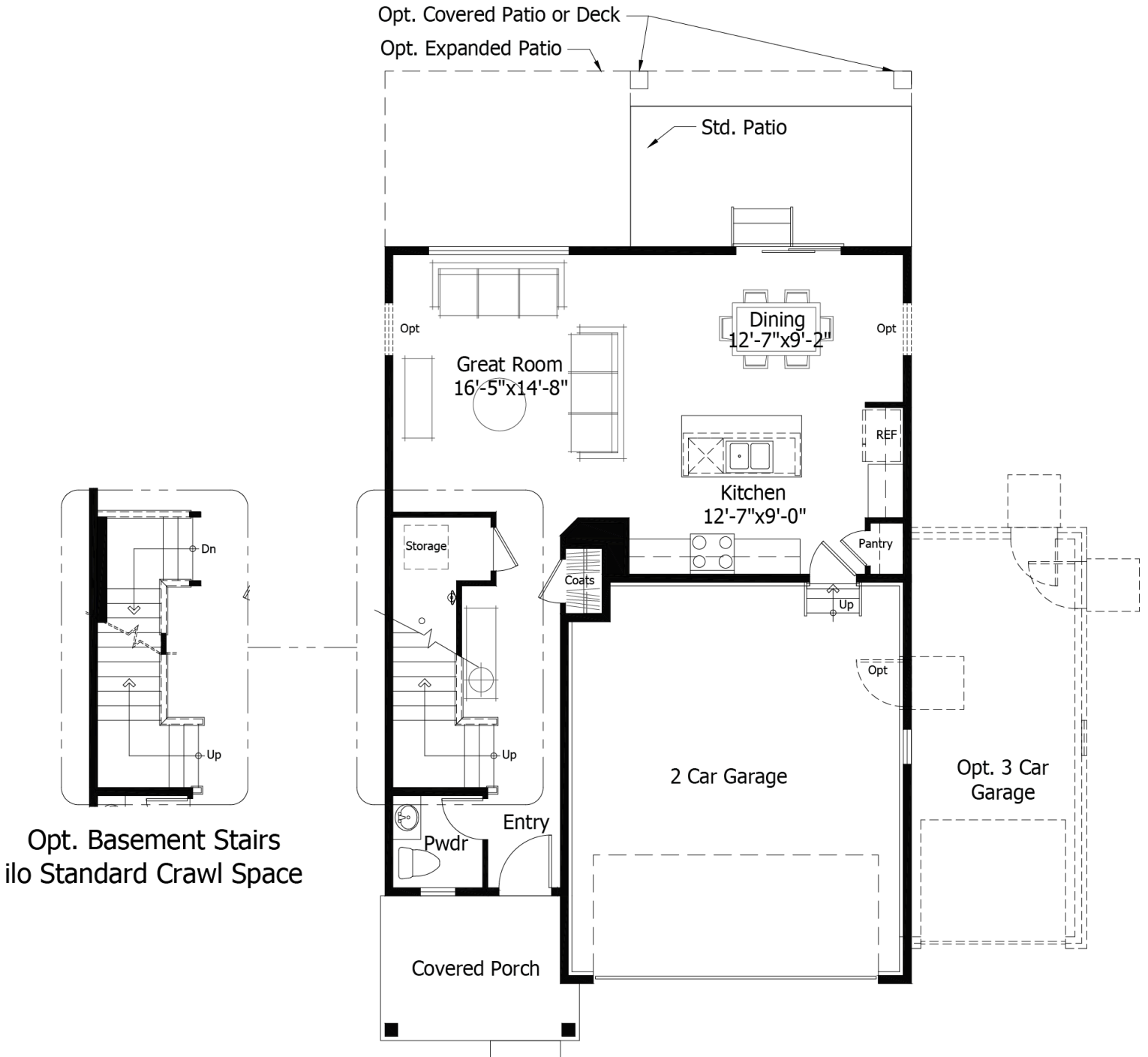
**3 Elevations Available**

-  **2** Bedrooms
-  **0** Bathrooms
-  **1,765+** Sq. Ft.
-  **2** Car Garage



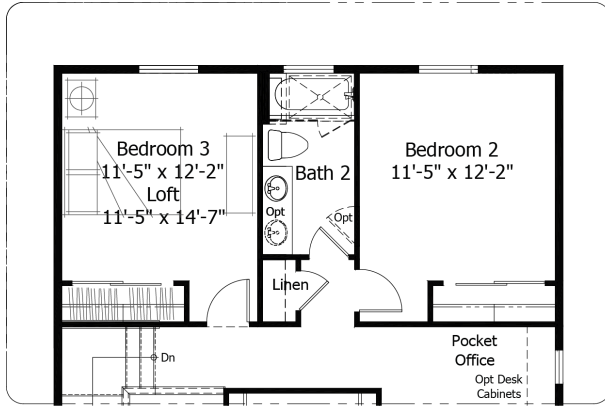
All square footage is approximate. Renderings are artist's conceptions and may vary slightly from the actual home. Homes may be built in reverse of plans shown, depending on site conditions. Minor architectural changes may be made occasionally at the option of the builder. Please contact your Sales Consultant for details.

# Main

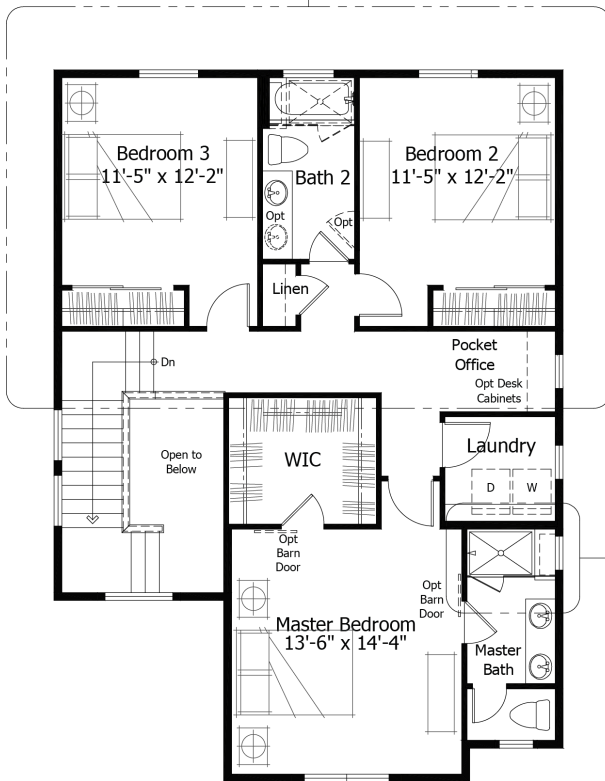


All square footage is approximate. Renderings are artist's conceptions and may vary slightly from the actual home. Homes may be built in reverse of plans shown, depending on site conditions. Minor architectural changes may be made occasionally at the option of the builder. Please contact your Sales Consultant for details.

# Upper



Opt. 2-Bedroom with Loft  
Upper Level Layout



All square footage is approximate. Renderings are artist's conceptions and may vary slightly from the actual home. Homes may be built in reverse of plans shown, depending on site conditions. Minor architectural changes may be made occasionally at the option of the builder. Please contact your Sales Consultant for details.

# Lower



Opt. Basement  
Pocket Office

Opt. Basement

All square footage is approximate. Renderings are artist's conceptions and may vary slightly from the actual home. Homes may be built in reverse of plans shown, depending on site conditions. Minor architectural changes may be made occasionally at the option of the builder. Please contact your Sales Consultant for details.