

Single Family
Palette
Sterling





NEW HOME SPECIALIST

Call Us @ (719) 888-3682



Priced From
\$518,700

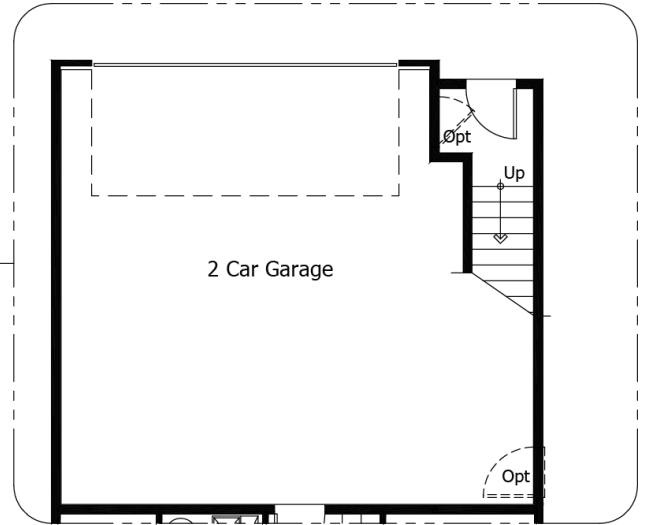
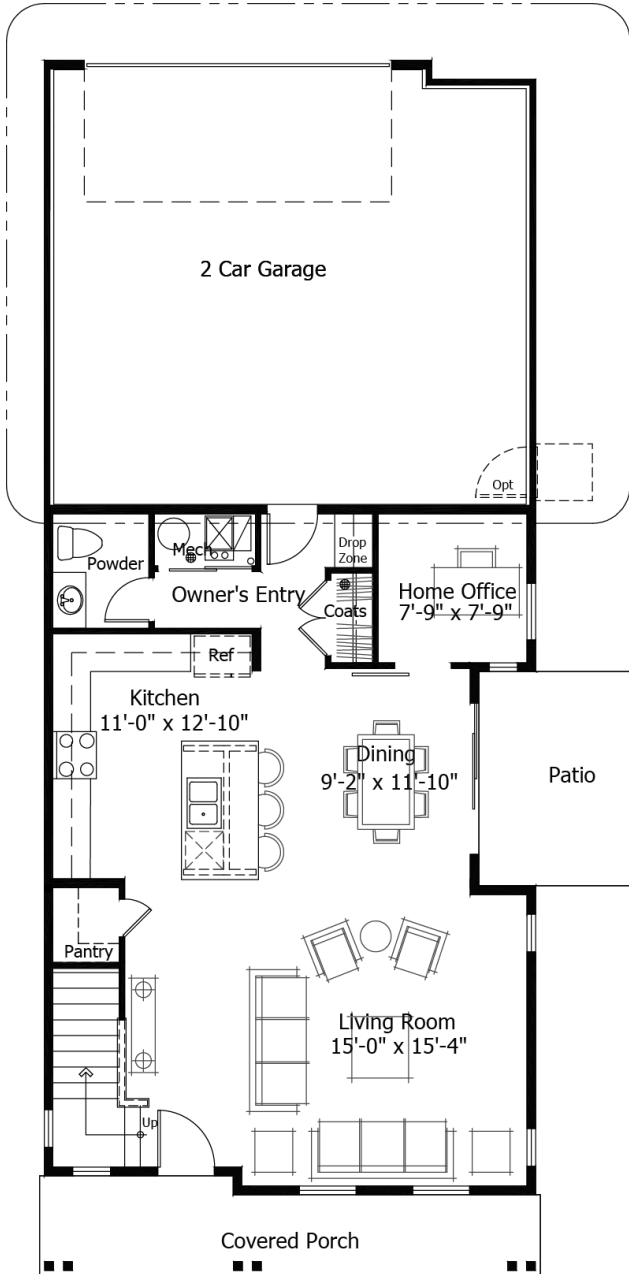
3 Elevations Available

-  **3** Bedrooms
-  **0** Bathrooms
-  **1,783+** Sq. Ft.
-  **2** Car Garage



All square footage is approximate. Renderings are artist's conceptions and may vary slightly from the actual home. Homes may be built in reverse of plans shown, depending on site conditions. Minor architectural changes may be made occasionally at the option of the builder. Please contact your Sales Consultant for details.

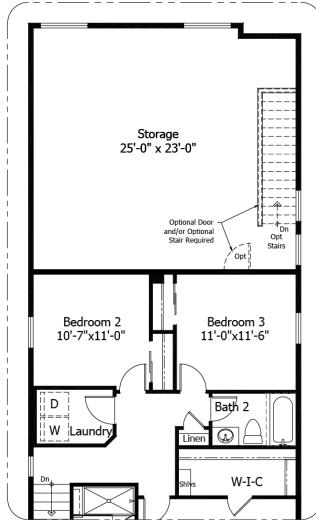
Main



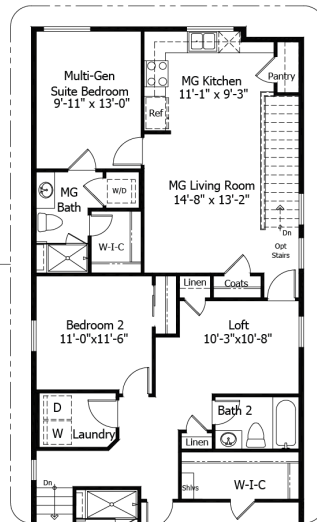
OPTIONAL GARAGE STAIRS
(TO OPTIONAL STORAGE /
OPTIONAL MULTI-GEN SUITE ABOVE)

All square footage is approximate. Renderings are artist's conceptions and may vary slightly from the actual home. Homes may be built in reverse of plans shown, depending on site conditions. Minor architectural changes may be made occasionally at the option of the builder. Please contact your Sales Consultant for details.

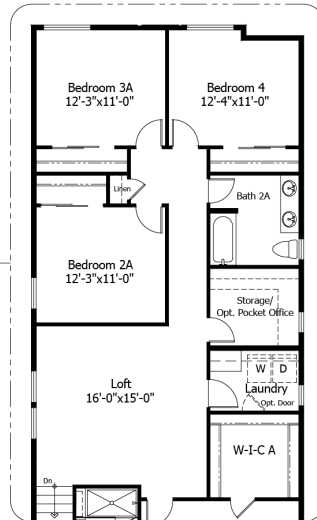
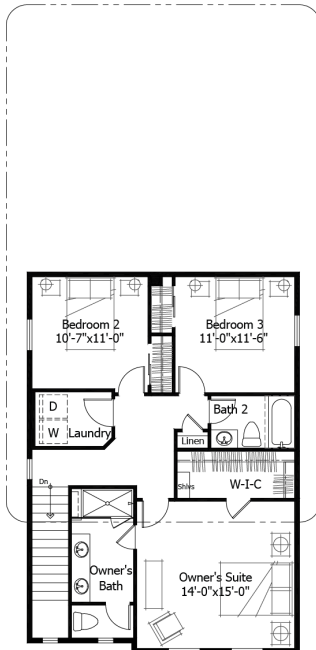
Upper



OPTIONAL STORAGE
(SHOWN W/ OPT STAIRS TO GARAGE)



OPTIONAL MULTI-GEN SUITE
(SHOWN W/ OPT STAIRS TO GARAGE)



OPTIONAL BONUS LIVING AREA

All square footage is approximate. Renderings are artist's conceptions and may vary slightly from the actual home. Homes may be built in reverse of plans shown, depending on site conditions. Minor architectural changes may be made occasionally at the option of the builder. Please contact your Sales Consultant for details.