


Single Family  
**Keystone**  
Timber Ridge

**NEW HOME SPECIALIST**  
Call Us @ (719) 249-6650



**Priced From**  
**\$740,800**

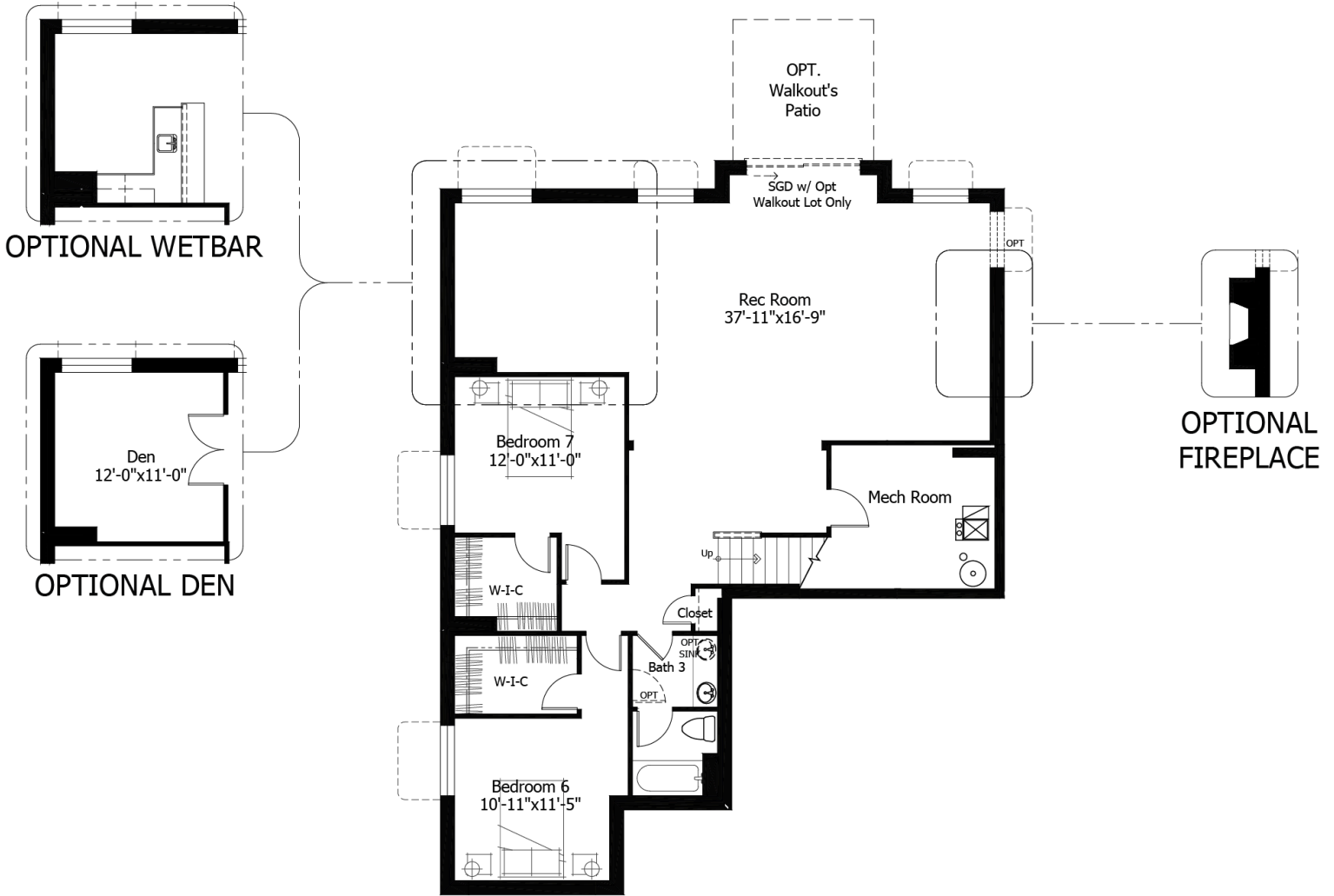
**3 Elevations Available**

-  **3** Bedrooms
-  **0** Bathrooms
-  **5,016+** Sq. Ft.
-  **2** Car Garage



All square footage is approximate. Renderings are artist's conceptions and may vary slightly from the actual home. Homes may be built in reverse of plans shown, depending on site conditions. Minor architectural changes may be made occasionally at the option of the builder. Please contact your Sales Consultant for details.

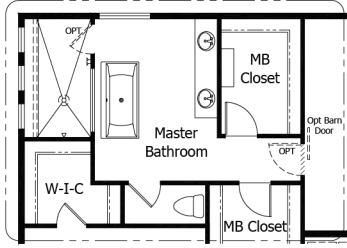
# Lower



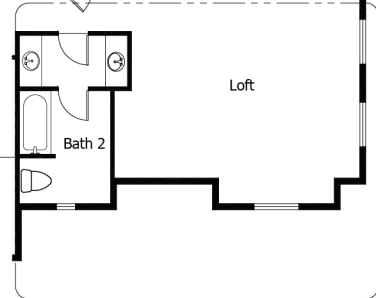
All square footage is approximate. Renderings are artist's conceptions and may vary slightly from the actual home. Homes may be built in reverse of plans shown, depending on site conditions. Minor architectural changes may be made occasionally at the option of the builder. Please contact your Sales Consultant for details.



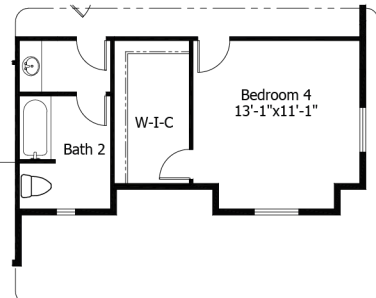
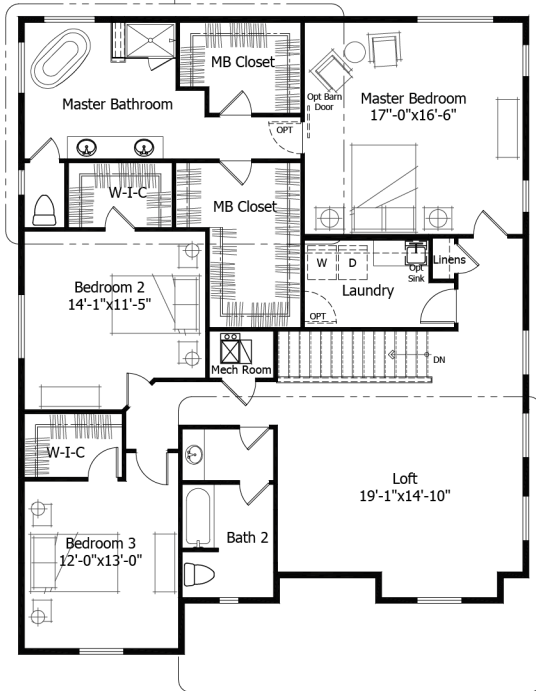
# Upper



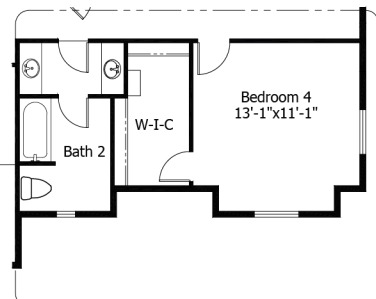
OPTIONAL MASTER BATH LAYOUT



OPTIONAL 2 VANITY BATH #2 W/  
 STANDARD LOFT LAYOUT



OPTIONAL BEDROOM 4 LAYOUT



OPTIONAL 2 VANITY BATH #2 W/  
 OPTIONAL BEDROOM 4 LAYOUT

All square footage is approximate. Renderings are artist's conceptions and may vary slightly from the actual home. Homes may be built in reverse of plans shown, depending on site conditions. Minor architectural changes may be made occasionally at the option of the builder. Please contact your Sales Consultant for details.