

Duplex  
**Peak Mountain Duo**  
 Monument Junction



Priced From  
**\$474,300**

**3 Elevations Available**

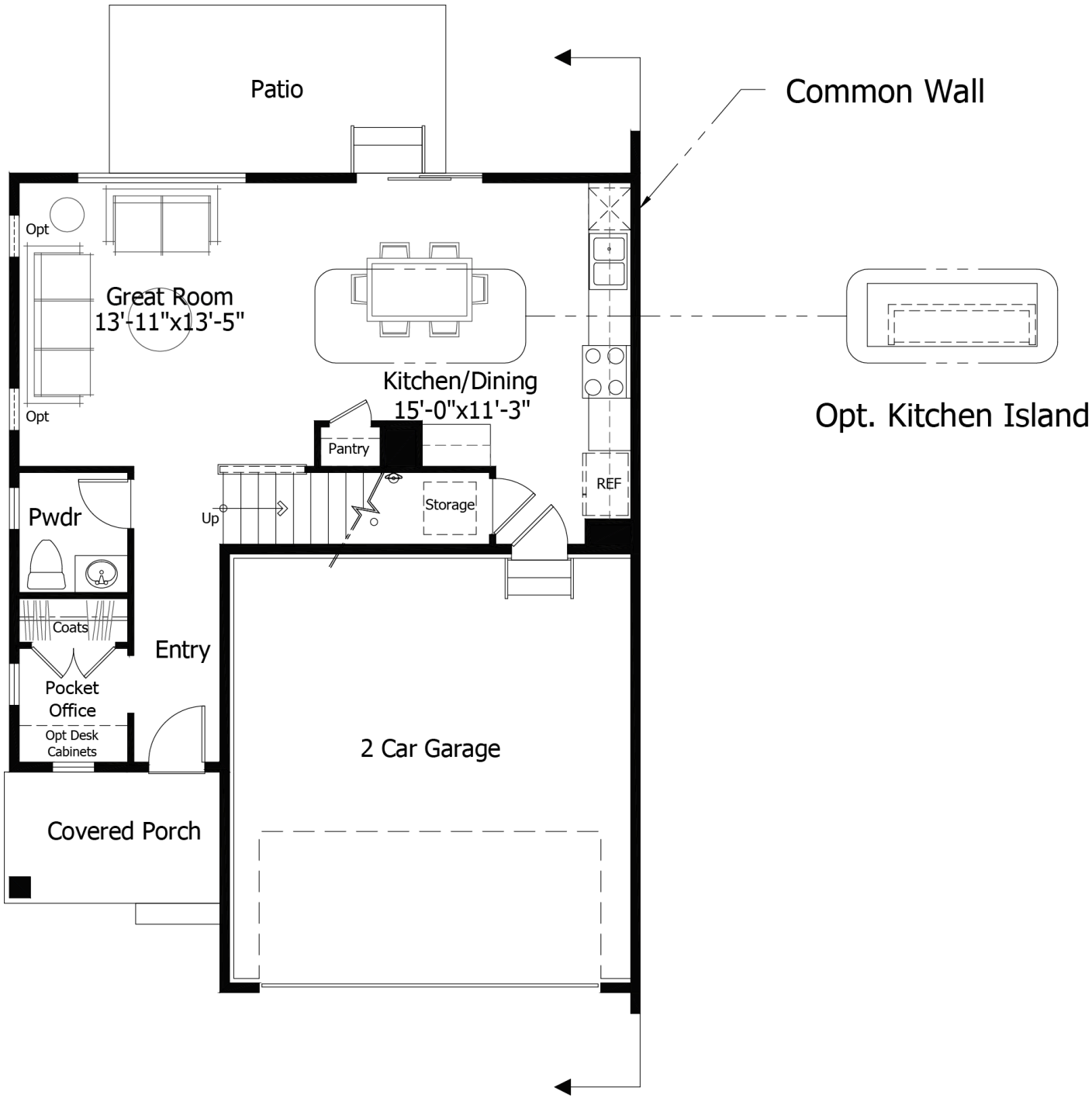
-  **2** Bedrooms
-  **0** Bathrooms
-  **1,557+** Sq. Ft.
-  **2** Car Garage



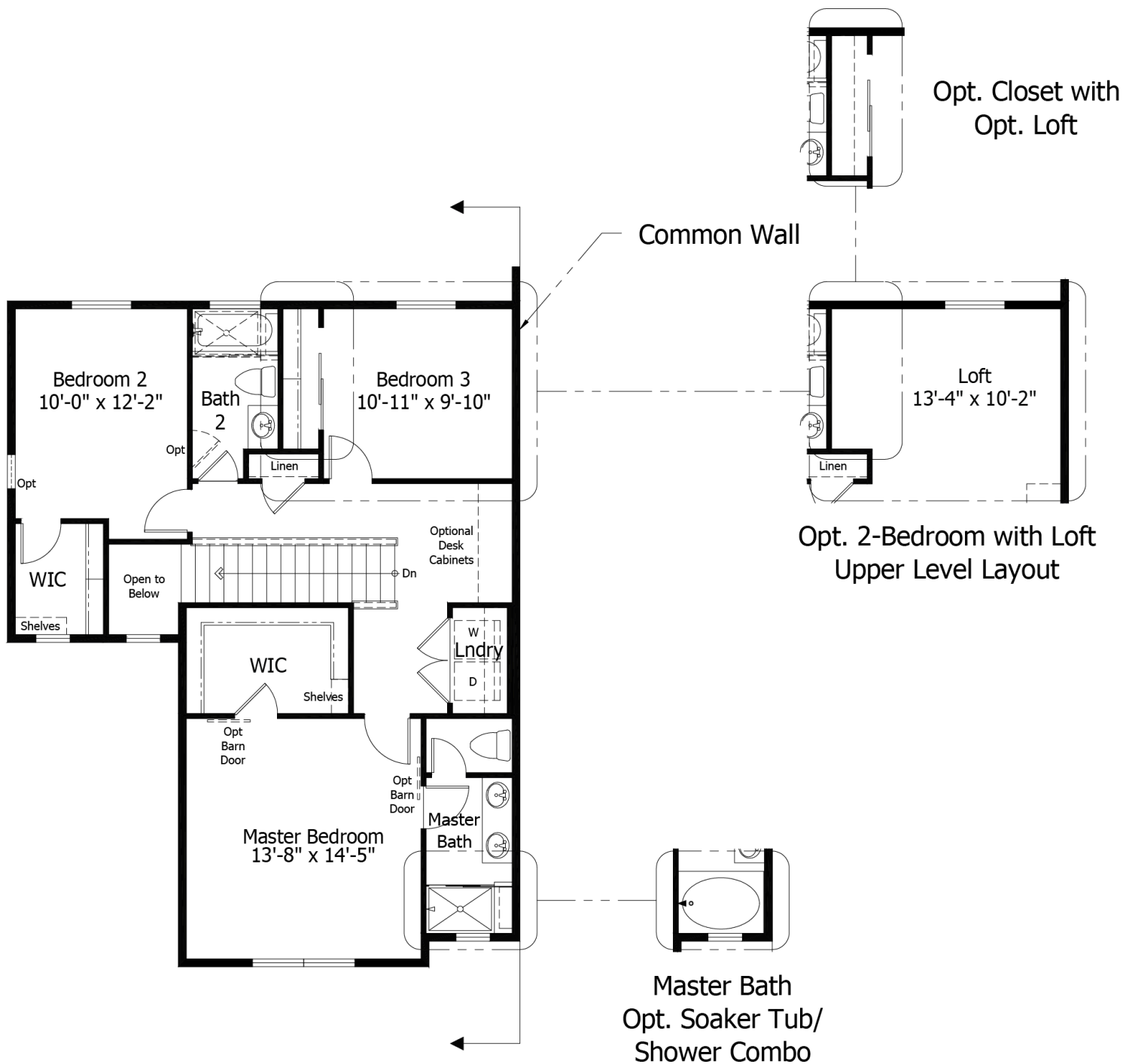
All square footage is approximate. Renderings are artist's conceptions and may vary slightly from the actual home. Homes may be built in reverse of plans shown, depending on site conditions. Minor architectural changes may be made occasionally at the option of the builder. Please contact your Sales Consultant for details.

Duplex  
**Peak Mountain Duo**  
Monument Junction

Unit 2 Main



All square footage is approximate. Renderings are artist's conceptions and may vary slightly from the actual home. Homes may be built in reverse of plans shown, depending on site conditions. Minor architectural changes may be made occasionally at the option of the builder. Please contact your Sales Consultant for details.

**Unit 2 Upper**

All square footage is approximate. Renderings are artist's conceptions and may vary slightly from the actual home. Homes may be built in reverse of plans shown, depending on site conditions. Minor architectural changes may be made occasionally at the option of the builder. Please contact your Sales Consultant for details.

Duplex  
**Peak Mountain Duo**  
Monument Junction

Unit 3 Main



All square footage is approximate. Renderings are artist's conceptions and may vary slightly from the actual home. Homes may be built in reverse of plans shown, depending on site conditions. Minor architectural changes may be made occasionally at the option of the builder. Please contact your Sales Consultant for details.

Duplex  
**Peak Mountain Duo**  
Monument Junction

Unit 3 Upper